

**FOR LEASE**

## 2nd Floor Creative Office Opportunity

19 Union St North Concord, NC 28025



## LEASING SUMMARY

Elevate your business with a full-floor opportunity in the heart of Downtown Concord. Located at 19 Union Street North, this entire second-floor suite offers a rare combination of character, functionality, and modern comfort.

Designed for productivity and flexibility, the space accommodates up to six private offices, many featuring custom built-ins and thoughtful finishes that create a polished, professional environment. Natural light pours in throughout the day, enhancing both energy and ambiance.

## PROPERTY SUMMARY

Building SqFt	1,560 SqFt
Year Built	1915
Lot Size (acres)	0.08
Parcel ID	56208861620000
Zoning Type	CC
County	Cabarrus
Coordinates	35.4107205, -80.5818545
Levels	2

## PROPERTY HIGHLIGHTS

- Two bathrooms, including one with a shower
- A full kitchen, ideal for team use or client hospitality
- Clean, modern finishes throughout
- A private, full-floor presence ideal for professional or creative users

Mortice Commercial Real Estate

126 Arlington Ave SE  
Concord, NC 28025

Office: 704-684-1958  
[www.morticecre.com](http://www.morticecre.com)

**STEVEN TICE, CCIM**

Principal/Broker

Mobile: 704

794-2294

[tice@morticecre.com](mailto:tice@morticecre.com)

License #: NC 168957

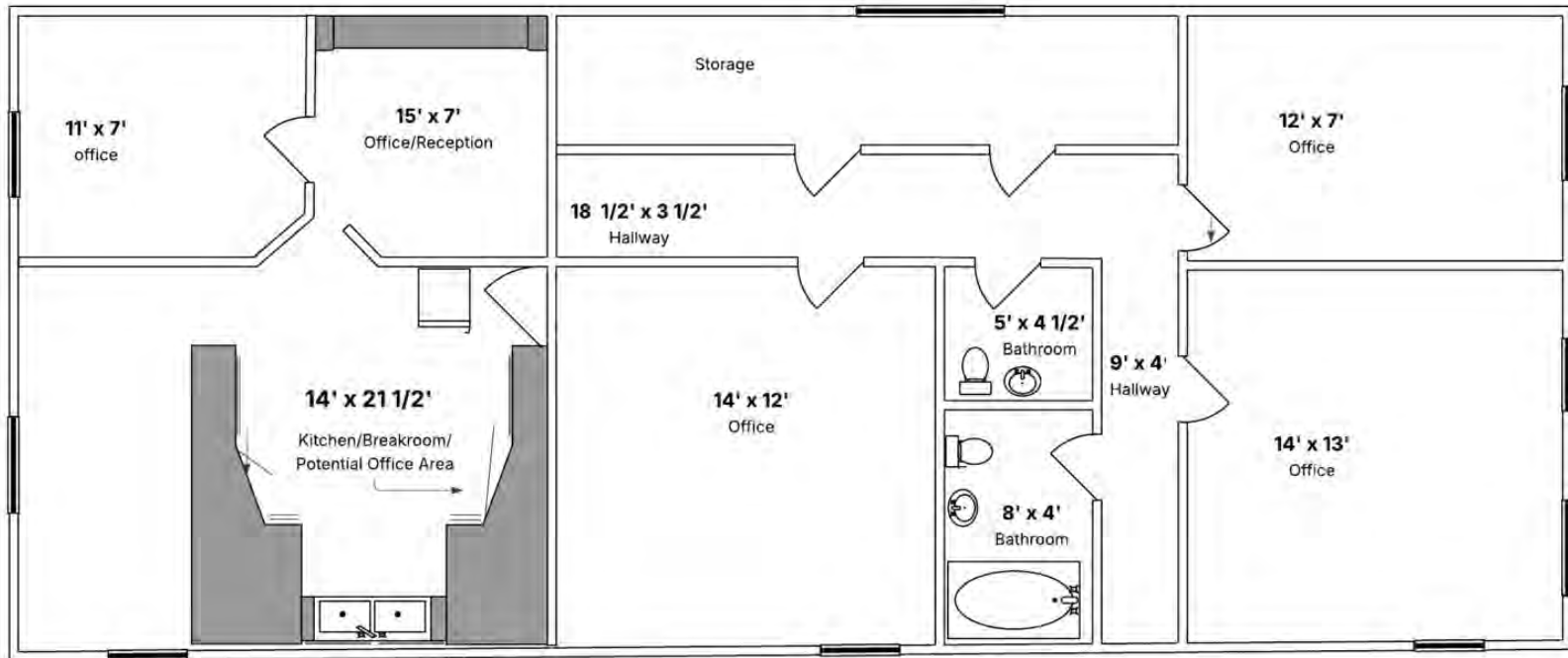


# FOR LEASE

## 2nd Floor Creative Office Opportunity

19 Union St North Concord, NC 28025

SPACE	SPACE USE	LEASE RATE	LEASE TYPE	SIZE(SF)	TERM
#19 2nd Floor	Office	\$ 26.92 SF/Yr	MG	1,560 SF	3 - 5 Yrs



Mortice Commercial Real Estate

126 Arlington Ave SE  
Concord, NC 28025

Office: 704-684-1958  
www.morticecre.com

**STEVEN TICE, CCIM**

Principal/Broker

Mobile: 704

794-2294

tice@morticecre.com

License #: NC 168957



# FOR LEASE

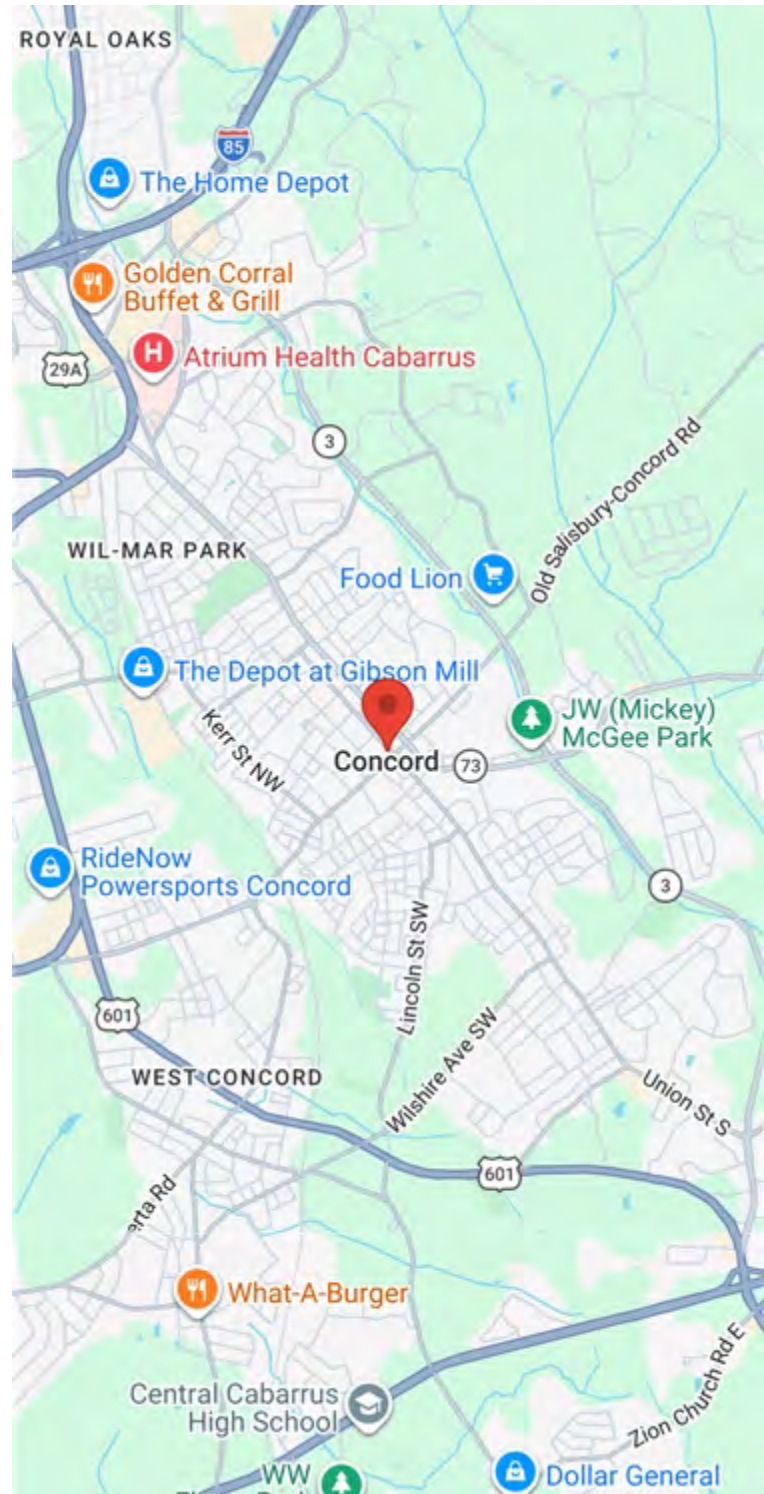
## 2nd Floor Creative Office Opportunity

19 Union St North Concord, NC 28025

POPULATION	1 MILE	3 MILE	5 MILE
2000 Population	10,944	34,814	62,992
2010 Population	9,991	36,568	76,394
2025 Population	11,138	42,709	95,979
2030 Population	12,057	45,502	102,128
2025-2030 Growth Rate	1.6 %	1.27 %	1.25 %
2025 Daytime Population	11,290	48,627	94,507

2025 HOUSEHOLD INCOME	1 MILE	3 MILE	5 MILE
less than \$15000	409	1,248	2,442
\$15000-24999	349	1,262	2,225
\$25000-34999	316	1,219	2,595
\$35000-49999	683	2,457	5,020
\$50000-74999	1,007	3,211	6,473
\$75000-99999	594	2,118	4,784
\$100000-149999	333	2,842	6,341
\$150000-199999	137	916	2,882
\$200000 or greater	384	1,583	4,143
Median HH Income	\$ 56,423	\$ 65,279	\$ 73,359
Average HH Income	\$ 85,332	\$ 93,752	\$ 100,201

HOUSEHOLDS	1 MILE	3 MILE	5 MILE
2000 Total Households	3,930	13,416	24,075
2010 Total Households	3,637	14,312	26,932
2025 Total Households	4,211	16,855	36,905
2030 Total Households	4,805	18,087	39,589
2025 Average Household Size	2.48	2.46	2.56
2025 Owner Occupied Housing	1,833	9,346	22,501
2030 Owner Occupied Housing	1,986	10,187	24,519
2025 Renter Occupied Housing	2,378	7,509	14,404
2030 Renter Occupied Housing	2,619	7,900	15,070
2025 Vacant Housing	522	1,336	2,279
2025 Total Housing	4,733	18,191	39,184



Mortice Commercial Real Estate

126 Arlington Ave SE  
Concord, NC 28025

Office: 704-684-1958  
www.morticecre.com

STEVEN TICE, CCIM

Principal/Broker

Mobile: 704

794-2294

tice@morticecre.com

License #: NC 168957



# FOR LEASE

## 2nd Floor Creative Office Opportunity

19 Union St North Concord, NC 28025



Mortice Commercial Real Estate

126 Arlington Ave SE  
Concord, NC 28025

Office: 704-684-1958  
[www.morticecre.com](http://www.morticecre.com)

**STEVEN TICE, CCIM**

Principal/Broker

Mobile: 704

794-2294

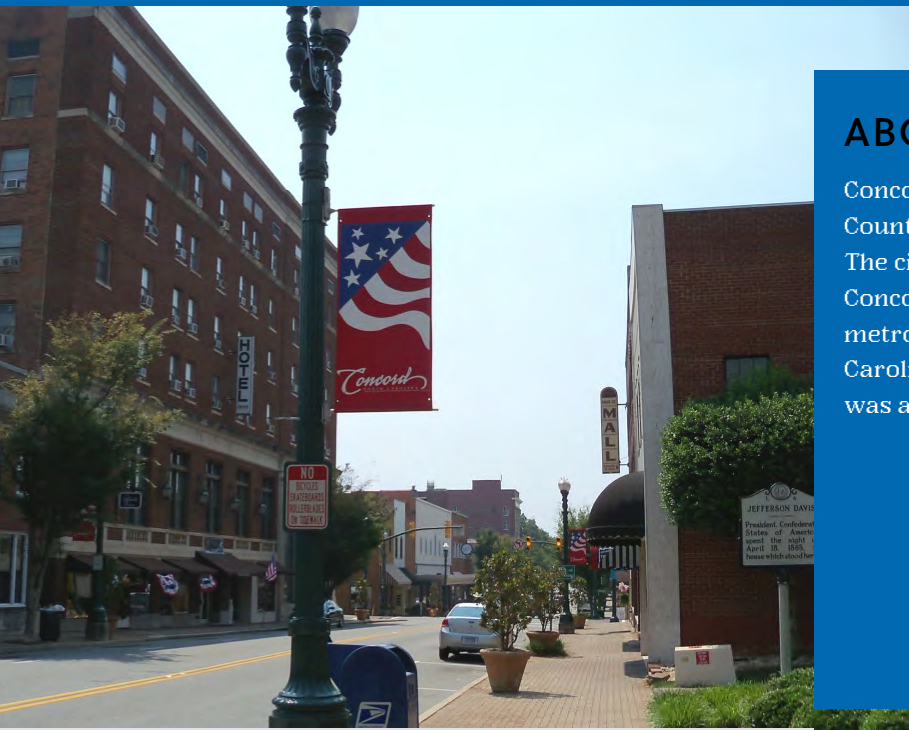
[tice@morticecre.com](mailto:tice@morticecre.com)

License #: NC 168957



# FOR LEASE

## 2nd Floor Creative Office Opportunity



### ABOUT CONCORD

Concord ( kon-KORD) is the most populous city in Cabarrus County, North Carolina, United States, and its county seat. The city had a population of 105,240 at the 2020 census. Concord is the second-most populous city in the Charlotte metropolitan area, tenth-most populous city in North Carolina and 287th-most populous city in the U.S. The city was a winner of the All-America City Award in 2004.

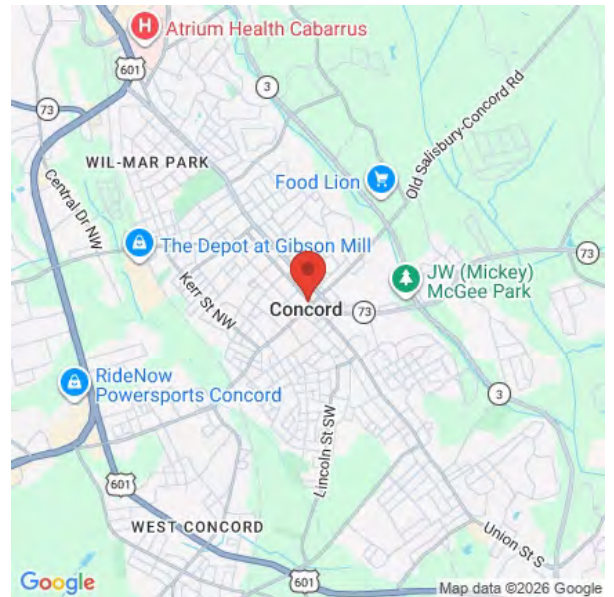
### CITY OF CONCORD

COUNTY CABARRUS

### AREA

CITY 64 SQ MI  
LAND 64 SQ MI  
ELEVATION 633 FT

### POPULATION



Mortice Commercial Real Estate  
126 Arlington Ave SE  
Concord, NC 28025  
Office: 704-684-1958  
www.morticecre.com

**STEVEN TICE, CCIM**  
Principal/Broker  
Mobile: 704-794-2294  
tice@morticecre.com  
License #: NC 163957